

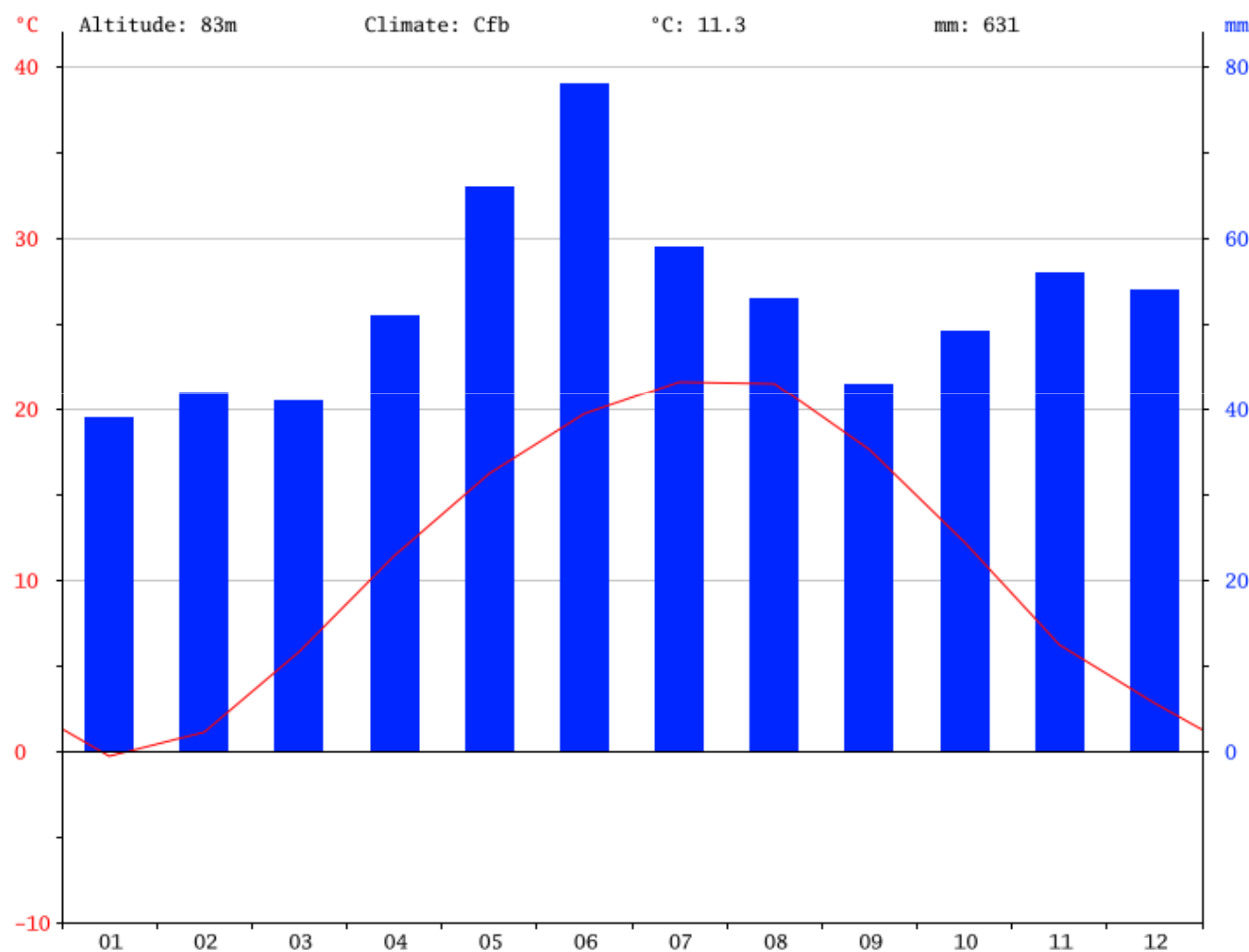


Agro-meteorological measurements



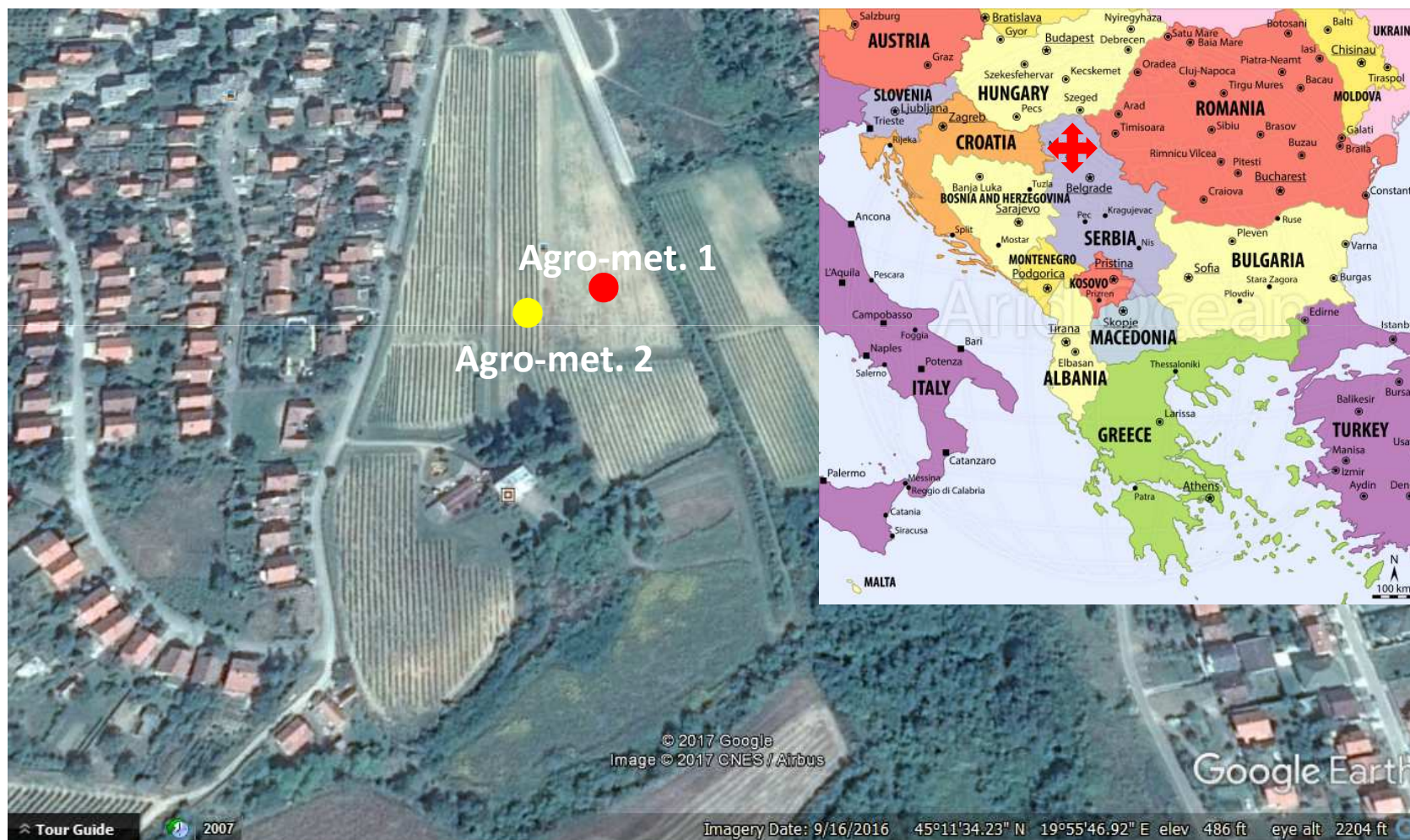


Climate Diagram Novi Sad



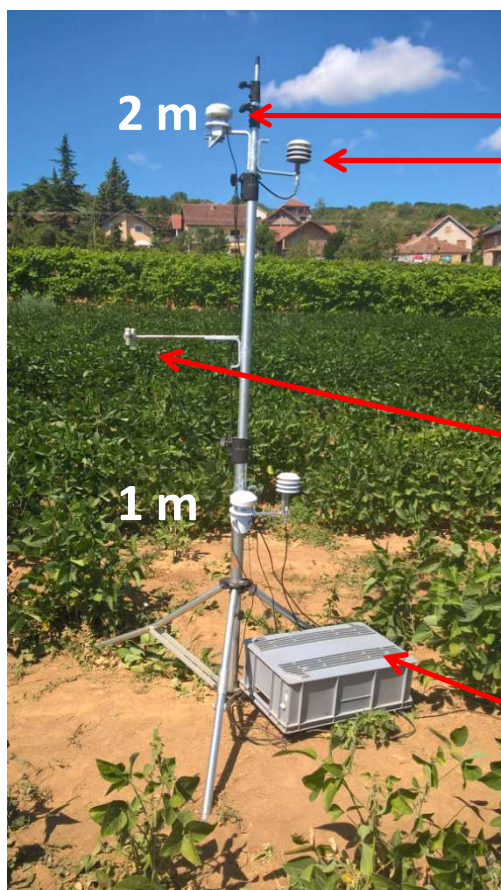


Sremski Karlovci





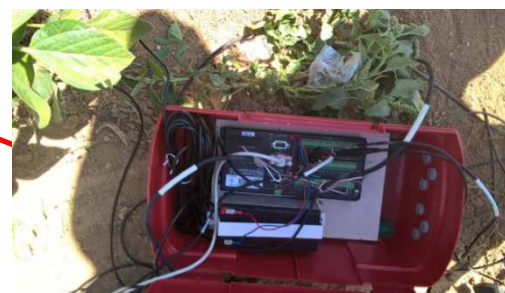
Agro-meteorological station 1



Anemometer
Hygrometer
Air temp



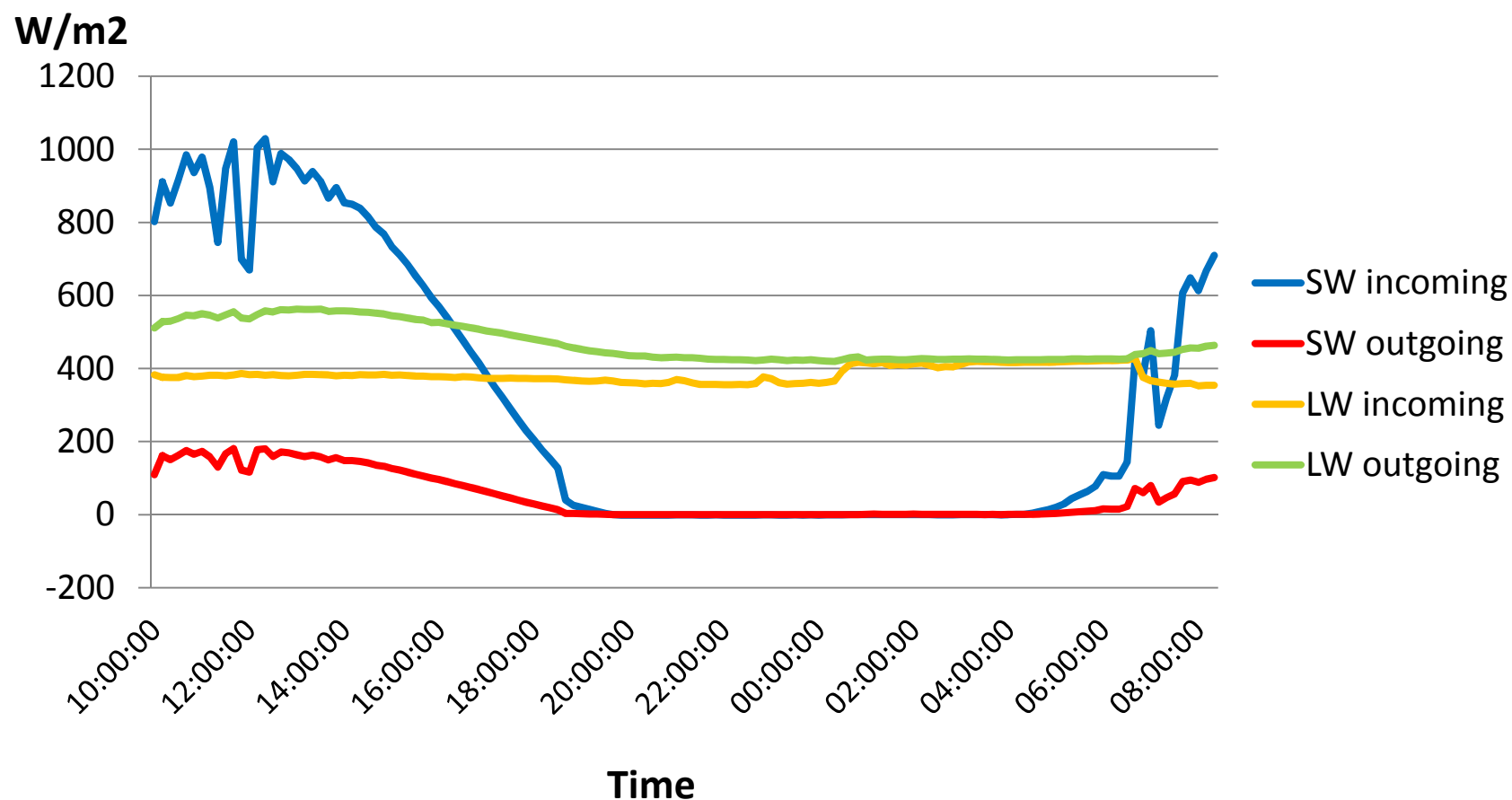
Pyranometer



Data logger

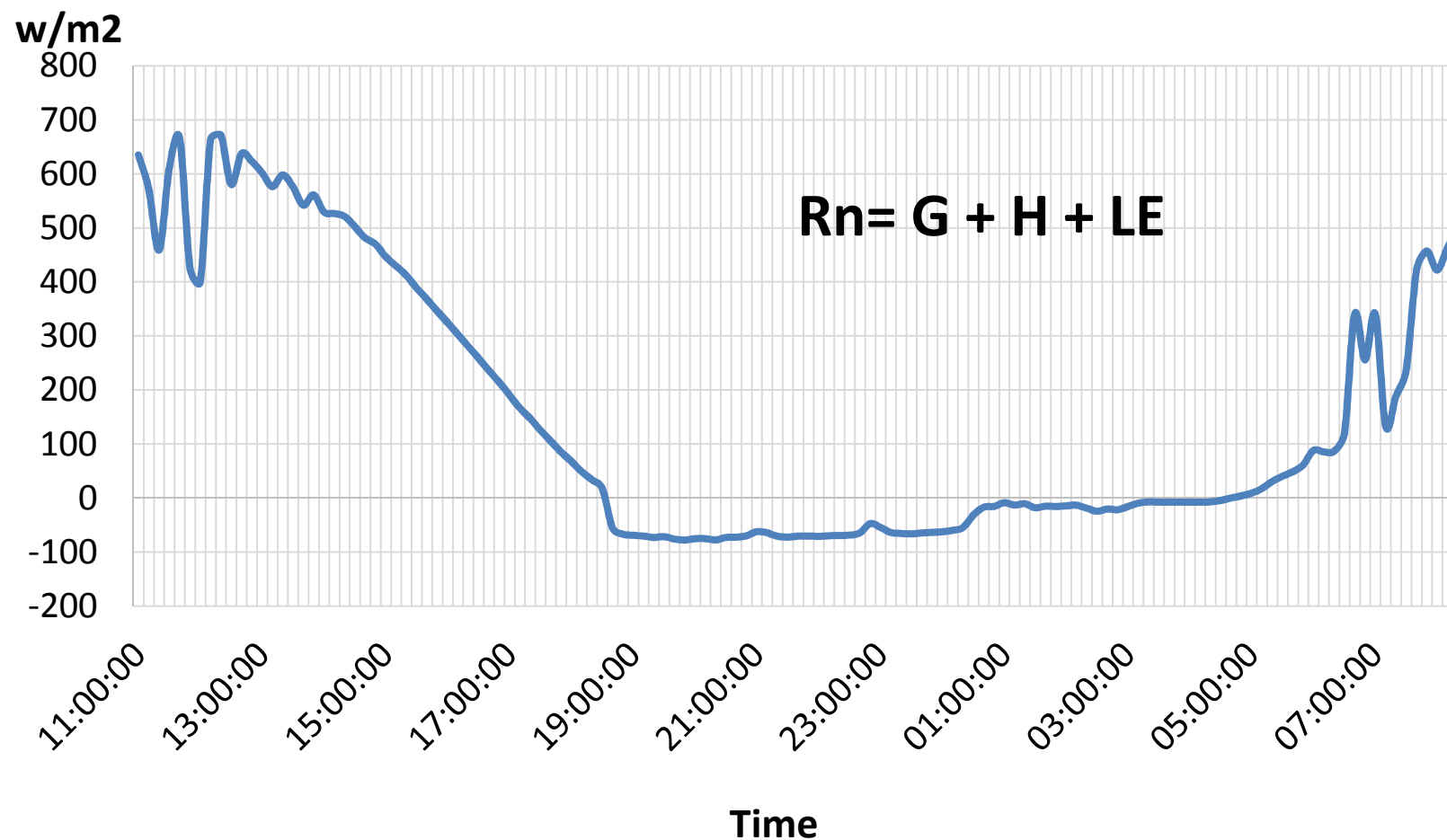


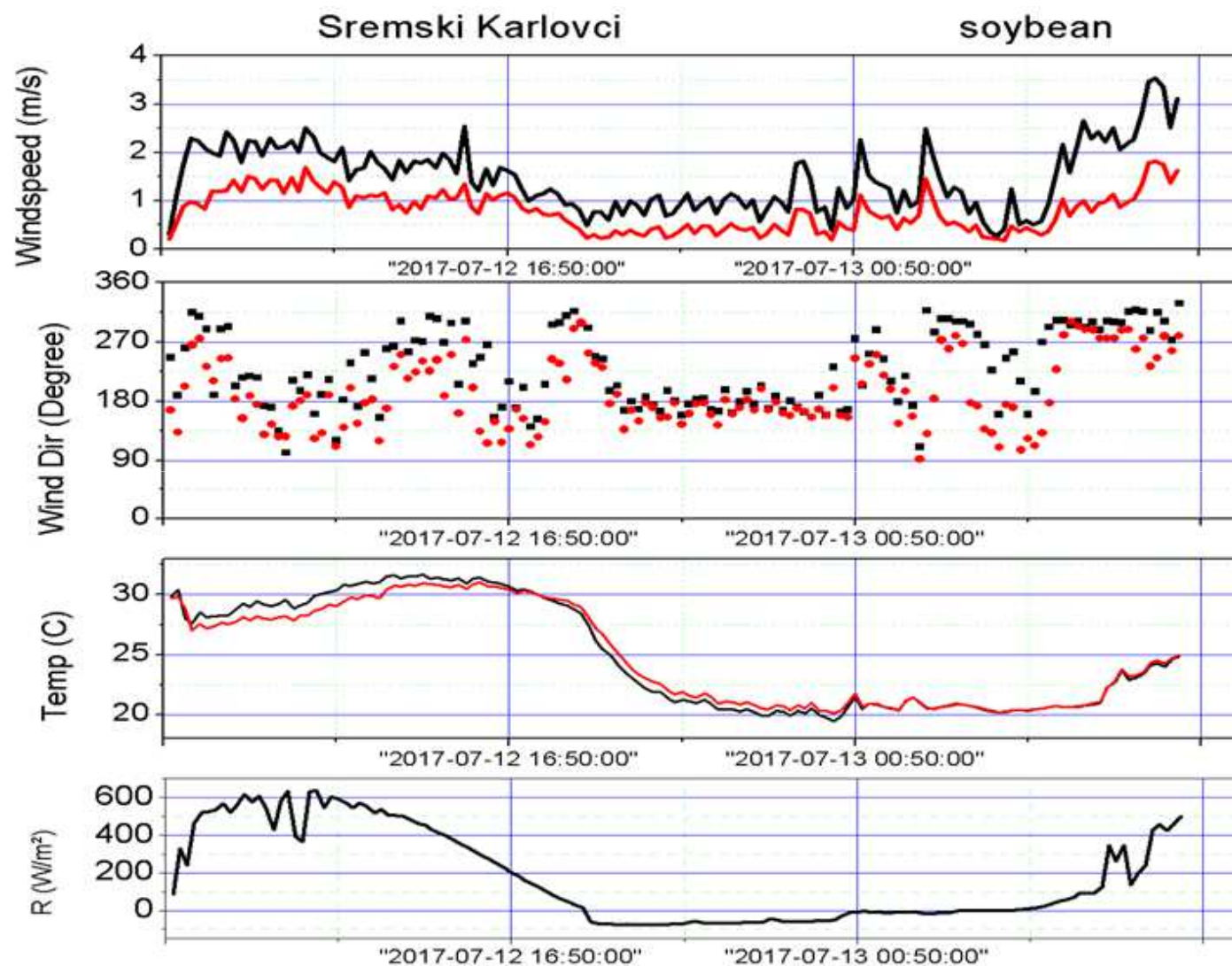
Longwave & shortwave radiation





Net radiation







Agro-meteorological station 2

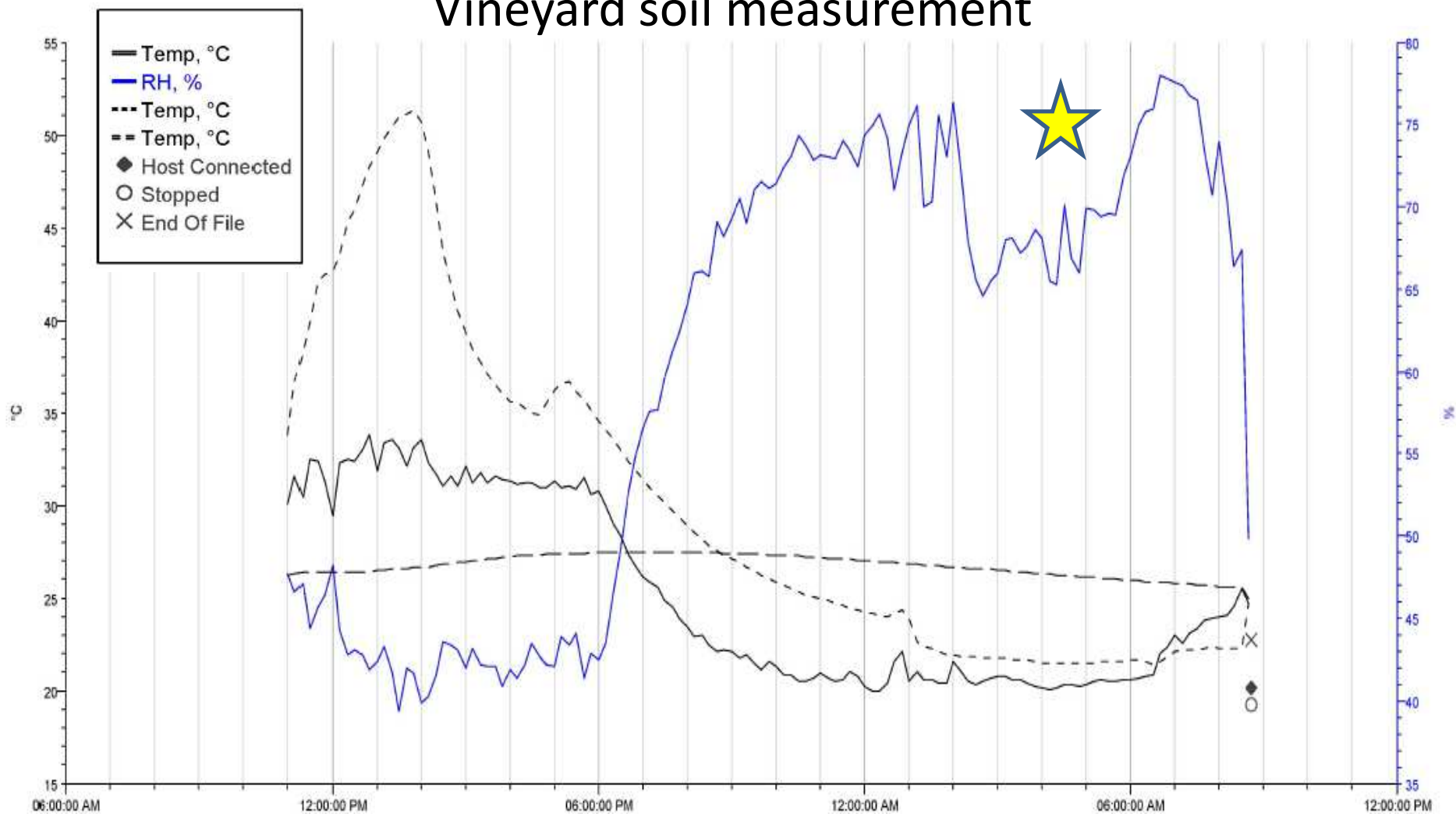


Hygrometer
Air temperature

Soil temperature at 2cm
Soil temperature at 20cm

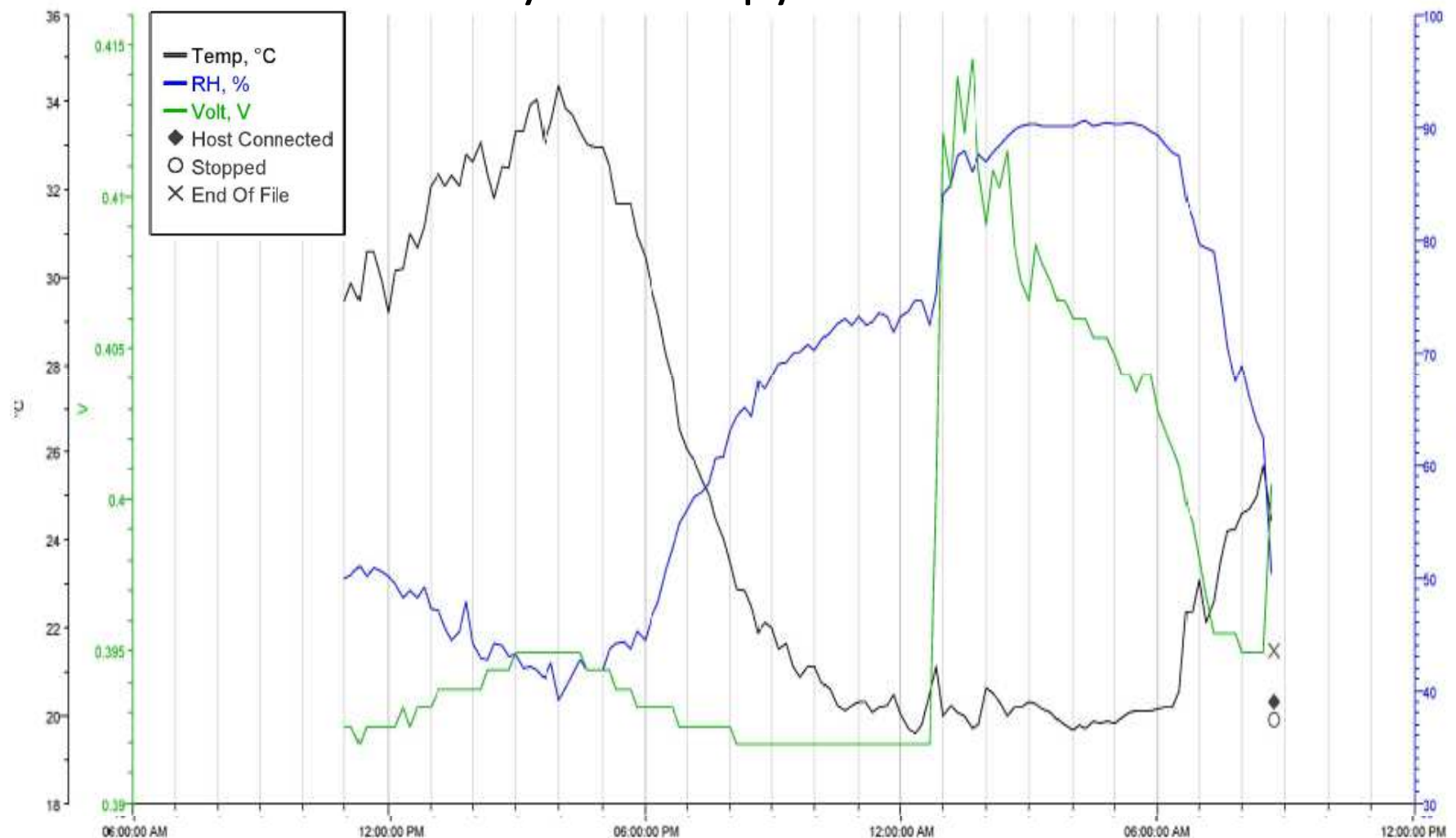


Vineyard soil measurement





Vineyard canopy measurement





Thermo-camera measurements

Measurements

Sp1	28.5 °C
Sp2	20.2 °C
Sp3	22.8 °C
Sp4	34.5 °C
Sp5	38.1 °C
Sp6	39.4 °C
Sp7	37.3 °C

Parameters

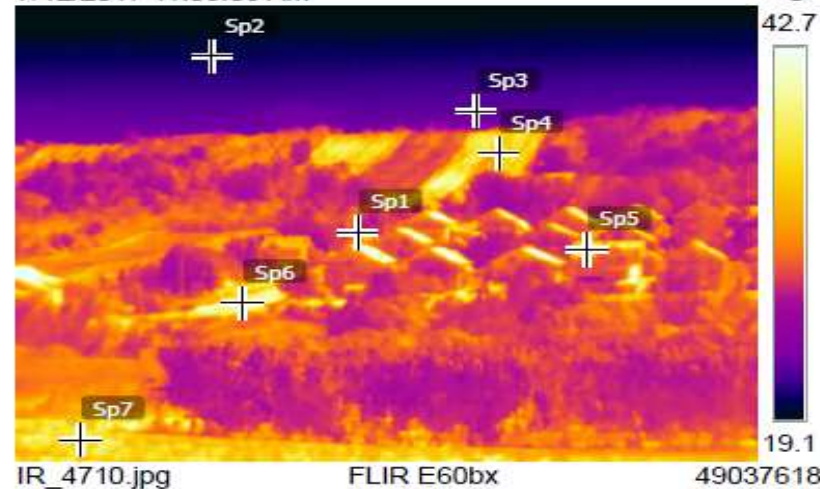
Emissivity	0.95
Refl. temp.	20 °C

7/12/2017 11:03:05 AM



DC_4711.jpg

7/12/2017 11:03:05 AM

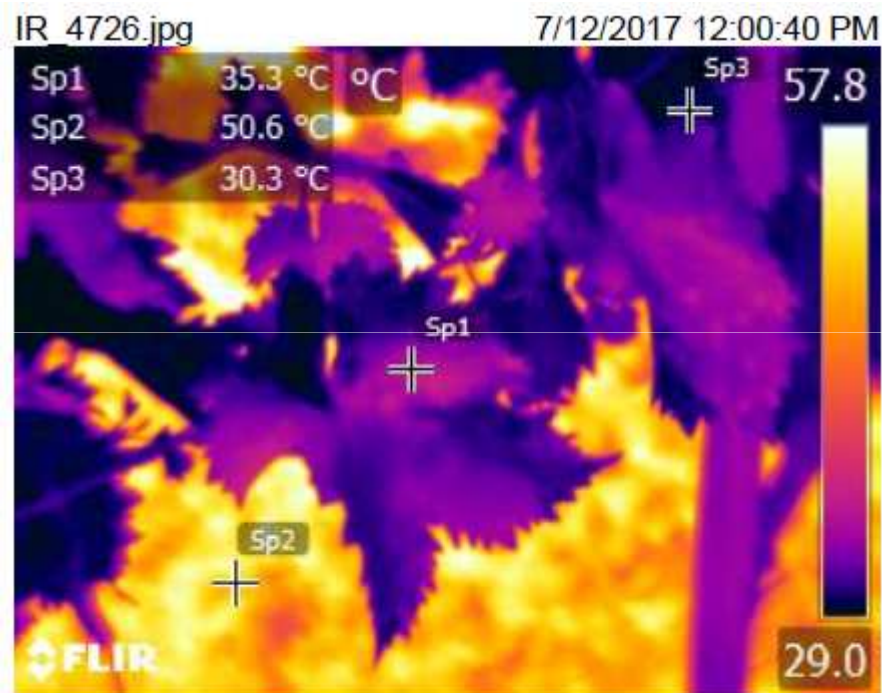


IR_4710.jpg

FLIR E60bx

49037618

Thermo-camera measurements





Problem solver

- How can we calculate evaporation by measuring latent heat?
- Why is shortwave incoming radiation lower than 0?